



# APPENDIX

## APPENDIX 1: METHODOLOGY

Clubs were categorized into three groups based on their location within New Zealand's urban-rural spectrum. The three groups are:

- Urban 1 (larger urban areas),
- Urban 2 (medium urban areas), and
- Rural areas

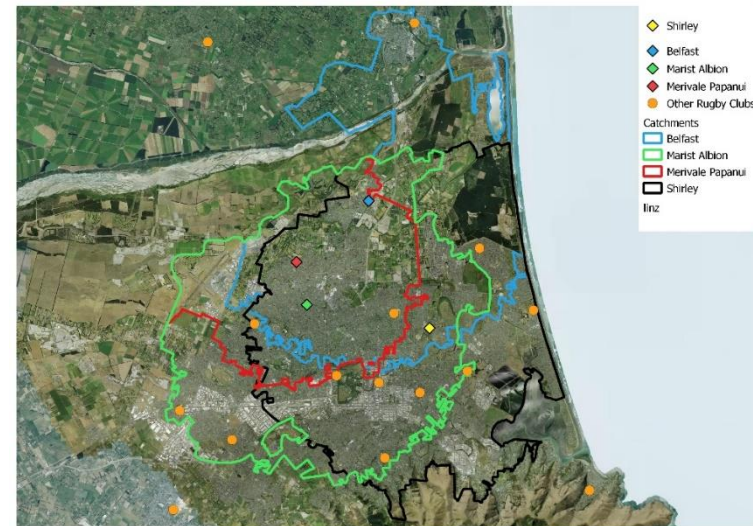
Within each of these area categories, clubs were further divided into small, medium, and large clubs, with the classification being determined by their total number of players in the year 2022.

### CATCHMENT DEFINITION AND GROWTH ASSESSMENT

The spatial catchment of each club was defined to gain insights into the potential growth in player demand, drawing from population projections. For this purpose, decay curves were developed for each area-size category, leveraging data from the residential locations of rugby players in 2022. These decay curves reveal the extent to which members are willing to travel, measured in kilometre road distance, to access a rugby club (Figure A1). Subsequently, the spatial catchment of each club was established according to the decay curve corresponding to the area-size category in which each club had been classified during the step described above.

The growth in demand within each specified catchment was estimated based on medium series StatsNZ population projections. These projections were segmented by age cohorts, offering valuable insights into the potential growth in player demand for the clubs.

FIGURE A.1 - OVERLAPPING CATCHMENTS - EXAMPLE



### CLUB PLAYER PROJECTIONS AND CLUB GROWTH CLASSIFICATION

Population growth within each club's spatial catchment was combined with player **attrition rates**, segmented by age cohorts, to forecast player numbers for each club over time. A matrix was created to determine player attrition rates using the 2011-2022 membership data for each area-size category. This matrix tracked active players by year and age, enabling the discernment of the proportion of players who maintained their affiliation with clubs over time (retained) and those who had ties severed with clubs (attrition).

The projected total players per age cohort were calculated in 5-year increments by summing the projected retained players and new players per year. Retained projected players were estimated based on attrition rates within age cohorts and their historical changes in pre-COVID years. New projected players were calculated by applying the catchment's population growth, segmented by age cohort, to the proportion of non-retained players.

To categorise the growth of clubs at the 10 and 20-year marks, the relative (percentage) change in each cohort was added to estimate the change in players for each club within each timeframe. The changes in the number of players per club were then analysed, and performers were identified using percentile distribution, categorised into low, medium, and high growth. The thresholds and the number of clubs in each category are displayed in the summary Table A.1.

TABLE A.1 - THRESHOLDS AND COUNTS

Area	Group	Growth	Percentile	2022-2028	2022-2033	2022-2038	2022-2043	Count
Urban 1	Small	Low	33%	3%	7%	10%	14%	19
Urban 1	Small	Medium	67%	6%	11%	18%	25%	19
Urban 1	Small	High	100%	9%	18%	29%	41%	19
Urban 1	Medium	Low	33%	-4%	-6%	-8%	-10%	17
Urban 1	Medium	Medium	67%	-2%	-3%	-4%	-4%	17
Urban 1	Medium	High	100%	4%	8%	12%	16%	17
Urban 1	Large	Low	33%	-3%	-6%	-8%	-10%	17
Urban 1	Large	Medium	67%	-3%	-6%	-8%	-10%	17
Urban 1	Large	High	100%	-3%	-5%	-7%	-9%	17
Urban 2	Small	Low	33%	-9%	-14%	-19%	-23%	23
Urban 2	Small	Medium	67%	-7%	-12%	-16%	-20%	22
Urban 2	Small	High	100%	3%	5%	7%	9%	23
Urban 2	Medium	Low	33%	1%	3%	5%	8%	20
Urban 2	Medium	Medium	67%	3%	6%	10%	14%	19
Urban 2	Medium	High	100%	7%	14%	21%	30%	20
Urban 2	Large	Low	33%	10%	20%	32%	45%	20
Urban 2	Large	Medium	67%	11%	21%	33%	46%	19
Urban 2	Large	High	100%	12%	23%	36%	50%	21
Rural 1	Small	Low	33%	-4%	-7%	-10%	-12%	20
Rural 1	Small	Medium	67%	-2%	-4%	-6%	-7%	20
Rural 1	Small	High	100%	2%	5%	8%	11%	20
Rural 1	Medium	Low	33%	-2%	-1%	2%	7%	16
Rural 1	Medium	Medium	67%	2%	7%	15%	27%	15
Rural 1	Medium	High	100%	14%	28%	45%	65%	17
Rural 1	Large	Low	33%	8%	17%	27%	39.0%	18
Rural 1	Large	Medium	67%	10%	19%	31%	44%	18
Rural 1	Large	High	100%	15%	33%	61%	6%	18

The projection process has several limitations and challenges, including:

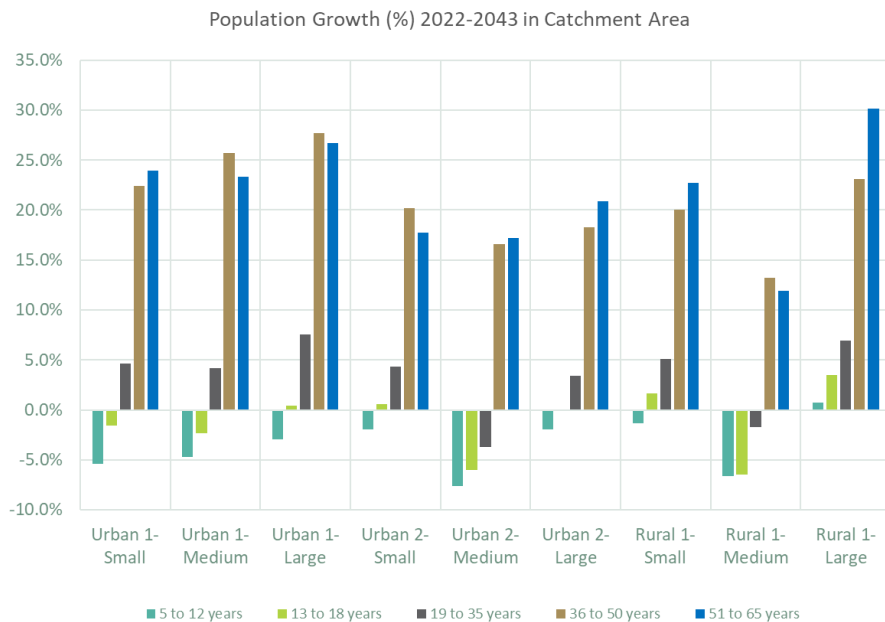
- **Estimation of Catchments:** Given the lack of consistent data for every club in the year 2022, the catchment areas for each club were estimated using decay curves based on the club's categorisation by size and location. As a result, the extent of these catchment areas is an approximation rather than an exact representation of the club's catchment.
- **Factors Considered:** The assessment of potential demand and catchment definitions considers spatial patterns and demographic factors of rugby players. Other variables, such as financial constraints, economic cycles, cultural factors, and ethnicity, are reflected in the catchment data but are not further differentiated or addressed in the projections.
- **Competition Between Clubs:** The competition between clubs was not factored into assessing potential demand. In areas where several catchments overlap, some projections may overrepresent, while others may underrepresent the number of players that a club can actually attract. Further analysis is recommended to address this issue.
- **Data Quality**
  - **Age:** The analysis relied on the age data from the Club Participation Data (2011 to 2022) for our analysis. It is important to note that in several instances, the date of birth information was either missing or inaccurate (e.g., members below 3 years old), particularly affecting smaller clubs.
  - **Place of residence:** Similarly, the analysis relied on players' residential information to generate decay curves, but in many cases, this data was missing or inaccurate, which is especially problematic for smaller clubs.

## APPENDIX 2: GROWTH OUTLOOK PER CLUB CATEGORY

The population growth per age cohort within the clubs' catchments is summarised by area-size category in Figure A.2. The analysis reveals a projected decline in the 5 to 12-year-old age cohort across all area-size categories, except for the Rural – Large category. This relates to the population in the catchments and should not be confused with player numbers. Notably, the Rural – Large category is anticipated to experience substantial increases in the 13 to 18 years and 51 to 65 age groups compared to all other categories.

Overall, the 36 to 50-year-old and 51 to 65-year-old age cohorts' populations are anticipated to experience significant growth across all area-size categories. This is consistent with the anticipated population ageing.

FIGURE A.2 - GROWTH POTENTIAL (BY AGE AND CATEGORY, 2022 - 2043)



## APPENDIX 3: GROWTH OUTLOOK PER AGE COHORT

The growth outlook per cohort integrates several streams of supporting analysis. These include demographic shifts, historic player profiles, and an analysis of attrition rates. The main features of these supporting analyses are outlined below (Figure A.3).

The analysis of attrition rates revealed that the age cohort of 13 to 18 years experienced the lowest player retention rates over the five pre-COVID years, averaging between 47% and 62% across the different area-size categories. Notably, this age cohort exhibited a comparatively higher retention rate in Rural-Large clubs and Urban 2 medium and large clubs, ranging from 66% to 67%. This cohort's expected lower retention rate aligns with the decline in players during the high school period.

FIGURE A.3 - PLAYER COUNT PER AGE AND SEASON (2011-2022)

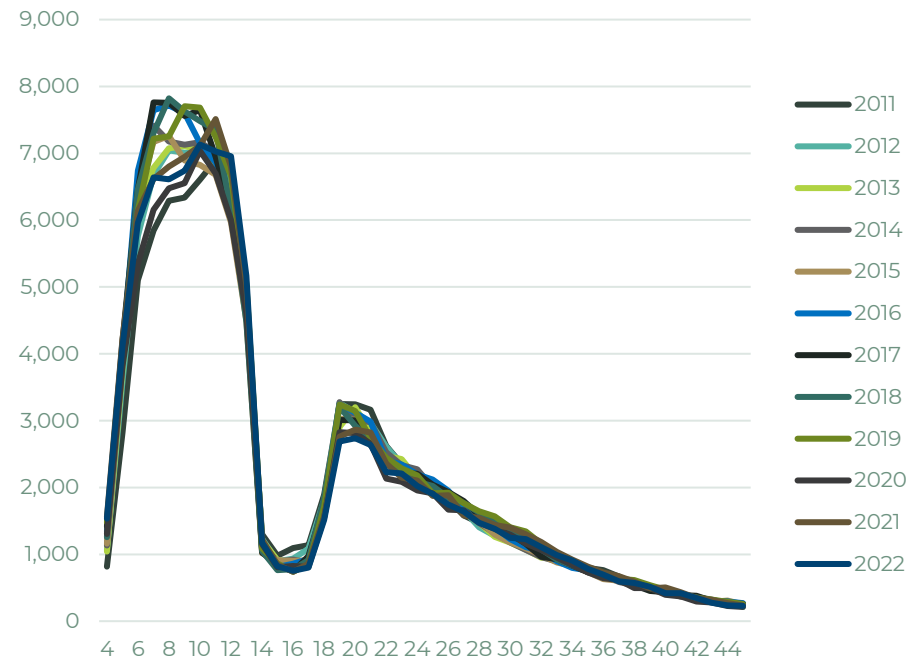
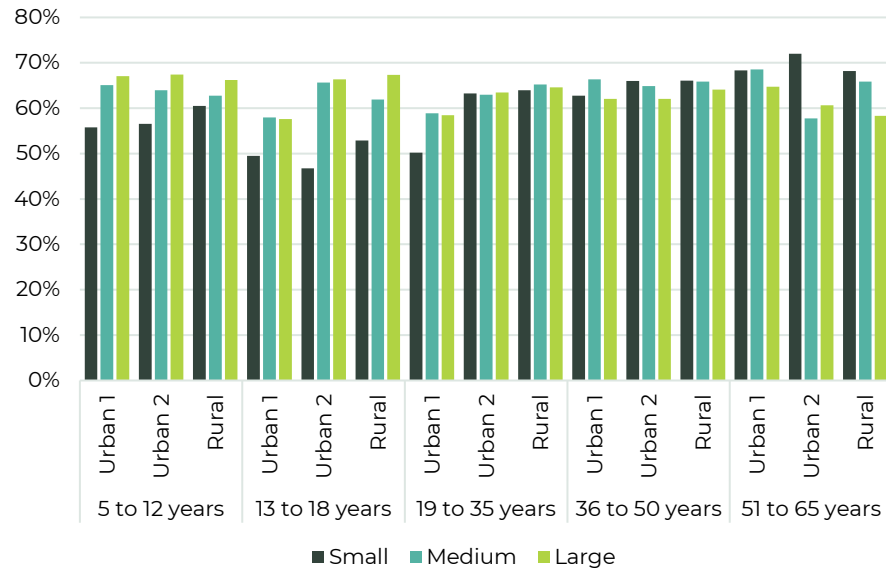


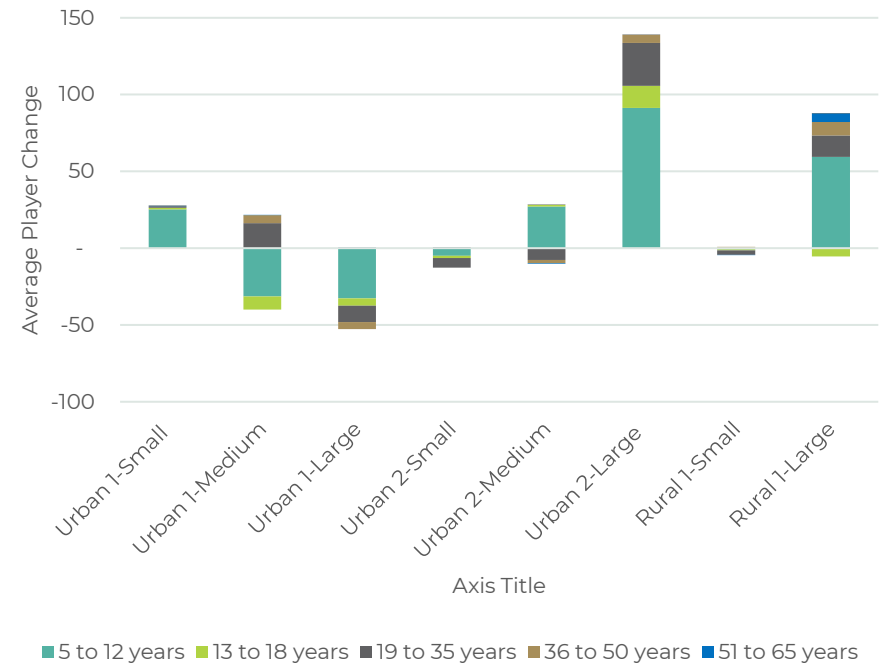
FIGURE A.4 – AVERAGE RETAINED SHARE OF PLAYERS



In general, smaller clubs tend to have a lower retention rate of school years' players (below 19 years old) and a greater retention rate of older players than larger size clubs, for all areas.

Figure A.5 illustrates the projected average change in players per age cohort, per club between 2022 and 2043 across area-size categories.

A.5 - PROJECTED AVERAGE CHANGE PER AGE COHORT (2022-2043)



Anticipated by catchment growth and attrition rates, the most significant growth in the average number of players is projected in the 5—to 12-year-old age cohort of Urban 2-large and Rural-large clubs. This is predominantly attributed to the substantial annual increase in the share of retained players in this age cohort within these clubs, which averaged 2.8% annual growth in the pre-COVID years.

The most substantial decrease in the average player count is anticipated within the 5 to 12 years age cohort of Urban 1 medium and large clubs, with an expected decline of 33 and 31 players per club, respectively. This is due to the ageing population patterns.

## APPENDIX 4: PROJECTIONS

Clubs	Area	Provincial Union	Size	Total Number of Players					Growth in Total Players				Club's Growth Classification		Growth based on Catchment population growth only (potential) 2022-2043
				2022	2028	2033	2038	2043	2022-2028	2022-2033	2022-2038	2022-2043	2022-2033	2022-2043	
Carlton Juniors	Urban 1	Auckland RFU	Medium	224	209	198	188	180	-7%	-12%	-16%	-20%	Low	Low	20%
College Rifles RFC	Urban 1	Auckland RFU	Large	818	792	773	756	740	-3%	-6%	-8%	-10%	High	High	21%
East Tamaki RFC	Urban 1	Auckland RFU	Medium	315	311	311	313	317	-1%	-1%	-1%	0%	High	High	18%
Eden RFC	Urban 1	Auckland RFU	Large	609	587	571	557	543	-4%	-6%	-9%	-11%	Low	Low	21%
Grammar Juniors	Urban 1	Auckland RFU	Medium	273	253	239	227	216	-7%	-12%	-17%	-21%	Low	Low	20%
Grammar TEC	Urban 1	Auckland RFU	Large	434	420	410	401	392	-3%	-6%	-8%	-10%	High	High	20%
Manukau Rovers RFC	Urban 1	Auckland RFU	Medium	341	332	327	324	323	-3%	-4%	-5%	-5%	Medium	Medium	18%
Marist Brother's OB RFC	Urban 1	Auckland RFU	Large	654	632	615	600	586	-3%	-6%	-8%	-10%	Low	Low	22%
Marist Eastern	Urban 1	Auckland RFU	Medium	362	336	317	301	287	-7%	-13%	-17%	-21%	Low	Low	22%
Mount Roskill Rugby Football Club Juniors	Urban 1	Auckland RFU	Small	85	91	98	106	115	8%	15%	24%	35%	High	High	20%
Mt Wellington RFC	Urban 1	Auckland RFU	Small	179	189	199	211	224	6%	11%	18%	25%	Medium	Medium	21%
Otahuhu RFC	Urban 1	Auckland RFU	Small	206	220	234	251	271	7%	14%	22%	31%	High	High	16%
Pakuranga United Rugby Club	Urban 1	Auckland RFU	Large	780	753	734	716	700	-3%	-6%	-8%	-10%	Low	Medium	21%
Papatoetoe RFC	Urban 1	Auckland RFU	Large	770	743	723	705	688	-4%	-6%	-8%	-11%	Low	Low	17%
Ponsonby Rugby Club	Urban 1	Auckland RFU	Large	1014	979	955	932	911	-3%	-6%	-8%	-10%	Low	Medium	20%
Puketapapa Roskill Sports Club	Urban 1	Auckland RFU	Small	127	129	130	132	133	1%	3%	4%	5%	Low	Low	21%
Suburbs RFC	Urban 1	Auckland RFU	Large	612	592	578	565	554	-3%	-6%	-8%	-9%	High	High	21%
Te Papapa RFC	Urban 1	Auckland RFU	Small	100	106	112	119	127	6%	12%	19%	27%	High	High	22%
University RFC	Urban 1	Auckland RFU	Large	623	604	590	578	566	-3%	-5%	-7%	-9%	High	High	22%
Waiheke Is RFC	Urban 1	Auckland RFU	Medium	219	208	201	195	191	-5%	-8%	-11%	-13%	Low	Low	19%
Waitakere City RFC	Urban 1	Auckland RFU	Medium	343	333	328	325	324	-3%	-4%	-5%	-5%	Medium	Medium	20%
Waiemata RFC	Urban 1	Auckland RFU	Large	429	414	404	394	385	-3%	-6%	-8%	-10%	Low	Medium	19%
Galatea Rugby Club	Rural 1	Bay Of Plenty Rugby Union	Small	45	42	40	38	36	-6%	-11%	-16%	-20%	Low	Low	-1%
Matakana Island Recreation & Sport	Rural 1	Bay Of Plenty Rugby Union	Small	0	0	0	0	0	0%	0%	0%	0%	High	High	0%
Matata Rugby & Sports Club	Rural 1	Bay Of Plenty Rugby Union	Medium	82	82	84	87	93	0%	2%	7%	13%	Medium	Medium	4%
Reporoa Rugby Club	Rural 1	Bay Of Plenty Rugby Union	Large	163	179	195	213	235	10%	19%	31%	44%	Medium	High	5%
Rotoiti Sports & Community Association Inc.	Rural 1	Bay Of Plenty Rugby Union	Large	182	198	214	232	253	9%	17%	27%	39%	Medium	Medium	7%
Ruatoki Sports & Cultural club	Rural 1	Bay Of Plenty Rugby Union	Large	175	190	205	224	245	9%	17%	28%	40%	Medium	Medium	4%
Taneatua Rugby Club	Rural 1	Bay Of Plenty Rugby Union	Small	26	25	24	23	22	-5%	-10%	-13%	-16%	Low	Low	3%
Te Puna Rugby Football Club	Rural 1	Bay Of Plenty Rugby Union	Large	335	370	404	443	490	10%	20%	32%	46%	High	High	27%
Te Teko Rugby Football Club Inc	Rural 1	Bay Of Plenty Rugby Union	Large	220	236	253	272	295	7%	15%	24%	34%	Low	Low	3%
Waimana Rugby Club	Rural 1	Bay Of Plenty Rugby Union	Medium	95	93	95	98	104	-2%	0%	3%	9%	Medium	Medium	3%
Waiohau Rugby Sports & Cultural Club	Rural 1	Bay Of Plenty Rugby Union	Small	0	0	0	0	0	0%	0%	0%	0%	High	High	0%
Arataki Rugby & Sports Club Inc.	Urban 1	Bay Of Plenty Rugby Union	Medium	273	264	257	251	247	-3%	-6%	-8%	-10%	Medium	Medium	27%
Eastern Pirates Rotorua Sports & Cultural Club	Urban 1	Bay Of Plenty Rugby Union	Small	82	85	89	93	97	4%	8%	13%	19%	Medium	Medium	5%
Greerton Marist Recreation And Community Sports Club	Urban 1	Bay Of Plenty Rugby Union	Large	444	432	421	411	402	-3%	-5%	-7%	-10%	High	High	26%
Judea Rugby Club	Urban 1	Bay Of Plenty Rugby Union	Small	126	132	138	145	152	5%	10%	15%	21%	Medium	Medium	28%
Kahukura Rugby Sports Club	Urban 1	Bay of Plenty Rugby Union	Small	195	206	217	230	245	6%	12%	18%	26%	High	High	5%
Marist St Michael's Rugby And Sports Club	Urban 1	Bay Of Plenty Rugby Union	Small	215	228	242	257	276	6%	12%	20%	28%	High	High	5%
Mt Maunganui Sports Club Inc	Urban 1	Bay Of Plenty Rugby Union	Large	369	359	351	343	335	-3%	-5%	-7%	-9%	High	High	27%
Papamoa Sports Rugby Club	Urban 1	Bay Of Plenty Rugby Union	Medium	323	309	298	288	280	-4%	-8%	-11%	-13%	Low	Low	26%
Rangataua Rugby Recreational Sports Club Inc	Urban 1	Bay Of Plenty Rugby Union	Medium	288	281	278	276	276	-2%	-4%	-4%	-4%	Medium	Medium	27%
Tauranga Rugby Sports & Recreation Club Inc	Urban 1	Bay Of Plenty Rugby Union	Large	410	398	389	379	370	-3%	-5%	-8%	-10%	High	High	27%
Waikite Sports Club (Inc)	Urban 1	Bay Of Plenty Rugby Union	Small	205	216	226	238	252	5%	10%	16%	23%	Medium	Medium	5%
Welcome Bay Rugby Sports Club	Urban 1	Bay Of Plenty Rugby Union	Small	0	0	0	0	0	0%	0%	0%	0%	Low	Low	0%
Whakarewarewa Rugby Community Sports Inc	Urban 1	Bay Of Plenty Rugby Union	Medium	299	289	282	276	273	-4%	-6%	-8%	-9%	Medium	Medium	5%
Eastern Districts Rugby Sports Club	Urban 2	Bay Of Plenty Rugby Union	Medium	174	182	189	197	206	4%	9%	13%	18%	High	High	23%
Edgcombe Rugby And Sports	Urban 2	Bay Of Plenty Rugby Union	Small	23	21	20	20	19	-7%	-11%	-15%	-18%	High	High	3%
Kawerau Sports Club	Urban 2	Bay Of Plenty Rugby Union	Small	62	57	53	50	46	-8%	-15%	-20%	-25%	Low	Low	3%
Nngototaha Sports & Community Ass.	Urban 2	Bay Of Plenty Rugby Union	Large	219	241	262	287	316	10%	20%	31%	44%	Low	Low	6%
Opatiki Sports Incorporated	Urban 2	Bay Of Plenty Rugby Union	Large	385	425	463	506	556	10%	20%	32%	44%	NA	Low	8%
Paroa Rugby & Sports Club	Urban 2	Bay Of Plenty Rugby Union	Medium	151	154	157	161	166	2%	4%	7%	10%	Medium	Medium	4%
Poroporo Rugby and Sports Club	Urban 2	Bay Of Plenty Rugby Union	Small	73	67	63	60	57	-8%	-13%	-18%	-21%	Medium	Medium	3%
Rangiuu Sports Club	Urban 2	Bay Of Plenty Rugby Union	Large	253	278	301	328	358	10%	19%	30%	42%	Low	Low	21%
Te Puke Sports & Recreation Club	Urban 2	Bay Of Plenty Rugby Union	Large	257	284	311	340	373	11%	21%	32%	45%	Medium	Medium	21%
Whakatane Marist & Sports Club (Inc)	Urban 2	Bay Of Plenty Rugby Union	Medium	151	154	158	163	169	2%	5%	8%	12%	Medium	Medium	3%
Karamea	Rural 1	Buller RFU Inc	Small	0	0	0	0	0	0%	0%	0%	0%	High	High	0%
Ngakawau	Urban 2	Buller RFU Inc	Small	68	63	61	58	56	-7%	-11%	-14%	-18%	High	High	-11%
Old Boys	Urban 2	Buller RFU Inc	Medium	145	142	141	141	141	-2%	-3%	-3%	-3%	Low	Low	-11%
Reefton	Urban 2	Buller RFU Inc	Small	83	76	72	68	64	-8%	-14%	-18%	-23%	Medium	Medium	-11%
Westport	Urban 2	Buller RFU Inc	Medium	146	145	146	149	151	-1%	0%	2%	4%	Low	Low	-11%
White Star	Urban 2	Buller RFU Inc	Medium	130	127	126	127	128	-2%	-3%	-3%	-2%	Low	Low	-11%
Amberley	Rural 1	Canterbury RFU	Large	142	156	170	186	205	10%	19%	31%	44%	High	High	17%
Ashley	Rural 1	Canterbury RFU	Large	277	304	331	362	399	10%	19%	31%	44%	Medium	Medium	24%

Clubs	Area	Provincial Union	Size	Total Number of Players					Growth in Total Players				Club's Growth Classification		Growth based on Catchment population growth only (potential) 2022-2043
				2022	2028	2033	2038	2043	2022-2028	2022-2033	2022-2038	2022-2043	2022-2033	2022-2043	
Banks Peninsula	Rural 1	Canterbury RFU	Medium	97	100	106	113	124	3%	9%	17%	28%	High	High	17%
Chatham Island Youth Rugby Club	Rural 1	Canterbury RFU	Small	40	39	39	39	38	-2%	-3%	-4%	-4%	High	High	10%
Dunsandel/Irwell	Rural 1	Canterbury RFU	Medium	101	101	107	116	129	0%	6%	15%	28%	Medium	High	41%
Glenmark Cheviot	Rural 1	Canterbury RFU	Large	191	205	220	237	256	7%	15%	24%	34%	Low	Low	8%
Hurunui	Rural 1	Canterbury RFU	Large	232	245	259	277	300	5%	11%	19%	29%	Low	Low	19%
Kirvee	Rural 1	Canterbury RFU	Large	118	131	143	159	177	11%	22%	34%	50%	High	High	42%
Lincoln University	Rural 1	Canterbury RFU	Large	159	156	155	156	157	-2%	-2%	-2%	-1%	Low	Low	20%
Ohoka	Rural 1	Canterbury RFU	Large	277	306	336	371	412	11%	21%	34%	49%	High	High	14%
Selwyn	Rural 1	Canterbury RFU	Medium	60	68	77	87	99	14%	28%	45%	65%	High	High	51%
Sheffield	Rural 1	Canterbury RFU	Medium	69	78	87	98	111	13%	27%	42%	61%	High	High	46%
Southbridge	Rural 1	Canterbury RFU	Large	160	179	200	229	271	12%	25%	43%	69%	High	High	46%
Springston	Rural 1	Canterbury RFU	Large	238	259	281	309	343	9%	18%	30%	44%	Medium	High	19%
Waihora	Rural 1	Canterbury RFU	Large	351	367	385	407	435	5%	10%	16%	24%	Low	Low	17%
West Melton	Rural 1	Canterbury RFU	Large	363	390	420	460	514	7%	16%	27%	42%	Low	Medium	20%
Belfast	Urban 1	Canterbury RFU	Medium	355	338	328	321	317	-5%	-8%	-9%	-11%	Low	Low	11%
Burnside	Urban 1	Canterbury RFU	Large	512	495	482	470	458	-3%	-6%	-8%	-11%	Medium	Low	14%
Christchurch	Urban 1	Canterbury RFU	Large	640	619	603	587	573	-3%	-6%	-8%	-11%	Medium	Low	12%
Halswell/Wigram Rugby	Urban 1	Canterbury RFU	Small	191	202	212	223	236	6%	11%	17%	24%	Medium	Medium	14%
High School Old Boys	Urban 1	Canterbury RFU	Large	444	429	418	407	397	-3%	-6%	-8%	-11%	Medium	Low	13%
Hornby	Urban 1	Canterbury RFU	Medium	270	260	255	253	253	-4%	-6%	-6%	-6%	Medium	Medium	13%
Linwood	Urban 1	Canterbury RFU	Medium	277	271	269	269	270	-2%	-3%	-3%	-3%	High	High	13%
Marist Albion	Urban 1	Canterbury RFU	Medium	339	328	322	318	316	-3%	-5%	-6%	-7%	Medium	Medium	13%
Merivale Papanui	Urban 1	Canterbury RFU	Small	119	126	133	141	149	6%	11%	18%	26%	High	High	10%
New Brighton	Urban 1	Canterbury RFU	Medium	318	305	297	290	285	-4%	-7%	-9%	-10%	Low	Low	17%
Otautahi	Urban 1	Canterbury RFU	Small	166	171	177	182	189	3%	6%	10%	14%	Low	Low	14%
Parklands - Chch	Urban 1	Canterbury RFU	Small	143	155	167	181	197	8%	17%	26%	38%	High	High	8%
Shirley	Urban 1	Canterbury RFU	Medium	294	288	286	285	286	-2%	-3%	-3%	-3%	High	High	12%
Suburbs	Urban 1	Canterbury RFU	Small	202	209	216	224	233	4%	7%	11%	15%	Medium	Medium	13%
Sumner	Urban 1	Canterbury RFU	Medium	341	327	319	313	308	-4%	-6%	-8%	-10%	Low	Low	4%
Sydenham	Urban 1	Canterbury RFU	Medium	314	304	298	293	291	-3%	-5%	-7%	-7%	Medium	Medium	14%
University (CAN)	Urban 1	Canterbury RFU	Medium	219	214	214	216	220	-2%	-2%	-1%	0%	High	High	12%
Darfield	Urban 2	Canterbury RFU	Large	243	271	297	326	359	11%	22%	34%	48%	High	High	57%
Diamond Harbour	Urban 2	Canterbury RFU	Small	97	90	85	81	77	-8%	-13%	-17%	-21%	Medium	Medium	9%
Kaipoi	Urban 2	Canterbury RFU	Large	310	343	375	411	453	11%	21%	33%	46%	Medium	Medium	21%
Kaikoura	Urban 2	Canterbury RFU	Medium	137	141	146	150	156	3%	6%	10%	14%	High	Medium	-1%
Leeston	Urban 2	Canterbury RFU	Medium	133	140	145	151	158	5%	9%	14%	19%	High	High	50%
Lincoln	Urban 2	Canterbury RFU	Large	497	551	601	658	724	11%	21%	32%	46%	Medium	Medium	30%
Lytelton	Urban 2	Canterbury RFU	Medium	190	188	187	187	188	-1%	-2%	-1%	-1%	Low	Low	12%
Oxford	Urban 2	Canterbury RFU	Large	209	232	253	278	306	11%	21%	33%	47%	High	High	23%
Prebbleton	Urban 2	Canterbury RFU	Large	521	577	630	690	759	11%	21%	32%	46%	Medium	Medium	19%
Rolleston	Urban 2	Canterbury RFU	Large	502	560	614	676	746	12%	22%	35%	49%	High	High	34%
Saracens	Urban 2	Canterbury RFU	Large	253	280	307	337	371	11%	21%	33%	47%	High	High	25%
Woodend	Urban 2	Canterbury RFU	Large	221	244	265	290	318	10%	20%	31%	44%	Low	Low	26%
Bombay RFC	Rural 1	Counties Manukau RFU	Large	334	366	397	435	478	9%	19%	30%	43%	Medium	Medium	21%
Maramarua RFC	Rural 1	Counties Manukau RFU	Large	160	178	195	215	238	11%	22%	34%	49%	High	High	31%
Patumahoe RFC	Rural 1	Counties Manukau RFU	Large	444	481	519	564	616	8%	17%	27%	39%	Medium	Low	24%
Ardmore Marist RSC	Urban 1	Counties Manukau RFU	Large	463	447	436	426	417	-3%	-6%	-8%	-10%	Medium	Medium	17%
Drury RFC	Urban 1	Counties Manukau RFU	Small	182	193	204	216	231	6%	12%	19%	27%	High	High	21%
Karaka RFC	Urban 1	Counties Manukau RFU	Large	425	411	401	392	383	-3%	-6%	-8%	-10%	Medium	High	18%
Manukau Inst. Tech.	Urban 1	Counties Manukau RFU	Small	0	0	0	0	0	0%	0%	0%	0%	Low	Low	0%
Manurewa RFC	Urban 1	Counties Manukau RFU	Large	494	478	466	456	446	-3%	-6%	-8%	-10%	Medium	High	17%
Papakura RFC	Urban 1	Counties Manukau RFU	Medium	234	232	233	234	237	-1%	-1%	0%	1%	High	High	18%
Pukekohe RFC	Urban 1	Counties Manukau RFU	Large	515	498	485	474	463	-3%	-6%	-8%	-10%	Medium	Medium	25%
Weymouth RFC	Urban 1	Counties Manukau RFU	Small	141	149	157	166	177	5%	11%	18%	25%	Medium	Medium	16%
Beachlands Maraetai RFC	Urban 2	Counties Manukau RFU	Large	224	247	271	298	329	10%	21%	33%	47%	Medium	High	22%
Onewhero RFC	Urban 2	Counties Manukau RFU	Medium	139	143	148	153	160	3%	6%	10%	15%	High	High	29%
Puni RFC	Urban 2	Counties Manukau RFU	Small	76	72	69	67	65	-5%	-9%	-12%	-15%	High	High	21%
Te Kauwhata RFC	Urban 2	Counties Manukau RFU	Medium	177	184	190	198	206	4%	7%	12%	16%	High	High	45%
Te Kohanga RFC	Urban 2	Counties Manukau RFU	Small	32	30	29	29	28	-5%	-8%	-11%	-13%	High	High	24%
Tuakau RFC	Urban 2	Counties Manukau RFU	Small	92	85	81	77	74	-7%	-12%	-16%	-20%	Medium	High	24%
Waiuku DRFC	Urban 2	Counties Manukau RFU	Large	262	290	317	349	385	11%	21%	33%	47%	High	High	25%
Hicks Bay Rugby Football Club	Rural 1	East Coast RFU	Medium	87	73	64	57	52	-16%	-27%	-34%	-40%	Low	Low	-1%
Hikurangi Sports Club Inc	Rural 1	East Coast RFU	Large	136	143	151	160	172	5%	11%	18%	27%	Low	Low	8%
Ruatoria City Sports Club Inc	Rural 1	East Coast RFU	Large	177	185	193	202	215	4%	9%	14%	21%	Low	Low	8%
Tihirau Victory Club	Rural 1	East Coast RFU	Large	140	149	158	170	183	7%	13%	21%	31%	Low	Low	1%
Tokarangari Sports Club Inc	Rural 1	East Coast RFU	Small	25	24	24	24	23	-3%	-5%	-6%	-7%	Medium	Medium	0%
Tokomaru Bay United Sports Club	Rural 1	East Coast RFU	Small	42	39	38	36	35	-6%	-11%	-14%	-17%	Low	Low	6%
Uawa Sports Rugby Union and Sports Club	Rural 1	East Coast RFU	Small	44	42	40	39	38	-5%	-8%	-11%	-14%	Low	Low	8%
Waiapu RFC	Rural 1	East Coast RFU	Medium	115	98	88	80	74	-15%	-24%	-30%	-35%	Low	Low	5%

Clubs	Area	Provincial Union	Size	Total Number of Players					Growth in Total Players				Club's Growth Classification		Growth based on Catchment population growth only (potential) 2022-2043
				2022	2028	2033	2038	2043	2022-2028	2022-2033	2022-2038	2022-2043	2022-2033	2022-2043	
Bridge Pa Sports	Rural 1	Hawkes Bay RFU	Large	180	198	215	236	260	10%	19%	31%	44%	High	High	14%
Onga Tiko United Football Club Inc	Rural 1	Hawkes Bay RFU	Small	33	29	27	25	23	-11%	-18%	-25%	-29%	Low	Low	12%
Otane Sports Club	Rural 1	Hawkes Bay RFU	Small	47	45	44	42	41	-4%	-7%	-10%	-12%	Medium	Medium	15%
Porangahau Rugby Club	Rural 1	Hawkes Bay RFU	Small	42	41	40	40	40	-3%	-4%	-5%	-6%	Medium	High	10%
Y.M.P. Rugby Club	Rural 1	Hawkes Bay RFU	Small	26	24	23	22	21	-6%	-11%	-16%	-21%	Low	Low	4%
Eskview RFC Inc	Urban 1	Hawkes Bay RFU	Small	113	120	127	135	144	6%	12%	20%	28%	High	High	8%
Flaxmere Rugby & Sports Club Inc	Urban 1	Hawkes Bay RFU	Small	139	147	155	164	174	6%	11%	18%	25%	High	High	13%
Hastings Rugby & Sports Club Inc	Urban 1	Hawkes Bay RFU	Large	427	414	403	393	384	-3%	-6%	-8%	-10%	High	Medium	16%
MAC Sports Association	Urban 1	Hawkes Bay RFU	Medium	263	261	261	262	265	-1%	-1%	0%	1%	High	High	14%
Maraenui Rugby & Sports Association	Urban 1	Hawkes Bay RFU	Small	117	120	123	127	131	3%	5%	8%	12%	Low	Low	9%
Napier Old Boys Marist	Urban 1	Hawkes Bay RFU	Large	383	371	361	353	344	-3%	-6%	-8%	-10%	Medium	Medium	9%
Napier Pirate Rugby & Sports Club	Urban 1	Hawkes Bay RFU	Large	391	377	366	356	347	-4%	-6%	-9%	-11%	Low	Low	9%
Napier Technical Old Boys Rugby Football Club Inc	Urban 1	Hawkes Bay RFU	Medium	278	272	270	268	268	-2%	-3%	-4%	-4%	High	High	9%
Tamatea Rugby Football Club Inc	Urban 1	Hawkes Bay RFU	Small	208	218	228	240	253	5%	10%	15%	22%	Medium	Medium	17%
Taradale Rugby Club	Urban 1	Hawkes Bay RFU	Large	461	446	435	424	414	-3%	-6%	-8%	-10%	Medium	Medium	9%
Aotea Sports Club Inc	Urban 2	Hawkes Bay RFU	Small	33	29	27	25	24	-11%	-18%	-23%	-28%	Low	Low	3%
Central Hawkes Bay Rugby & Sports Club Inc	Urban 2	Hawkes Bay RFU	Small	112	104	99	94	90	-7%	-12%	-16%	-20%	High	Medium	11%
Clive Rugby & Sports Club	Urban 2	Hawkes Bay RFU	Large	317	347	376	410	447	10%	19%	29%	41%	Low	Low	13%
Havelock North Rugby Club	Urban 2	Hawkes Bay RFU	Large	507	562	615	676	746	11%	21%	33%	47%	High	High	16%
Takapau Rugby Football Club Inc	Urban 2	Hawkes Bay RFU	Small	52	49	46	44	42	-6%	-11%	-15%	-18%	High	High	11%
Wairoa Athletic Rugby Football Club Inc	Urban 2	Hawkes Bay RFU	Small	52	48	45	42	41	-8%	-14%	-18%	-22%	Medium	Medium	6%
Toa Rugby Football Club	Urban 1	Horowhenua Kapiti RFU	Small	0	0	0	0	0	0%	0%	0%	0%	Low	Low	0%
Athletic - Horowhenua	Urban 2	Horowhenua Kapiti RFU	Medium	155	159	164	169	174	3%	6%	9%	12%	Medium	Medium	13%
Foxton Rugby Football Club	Urban 2	Horowhenua Kapiti RFU	Large	226	249	271	295	323	10%	20%	30%	43%	Low	Low	11%
Kapiti Gorillas	Urban 2	Horowhenua Kapiti RFU	Small	29	30	30	31	32	3%	5%	7%	9%	High	High	8%
Levin College Old Boys RFC	Urban 2	Horowhenua Kapiti RFU	Large	209	229	249	270	295	10%	19%	29%	41%	Low	Low	13%
Levin Wanderers Rugby Football Club	Urban 2	Horowhenua Kapiti RFU	Small	111	102	96	91	87	-8%	-13%	-18%	-22%	Medium	Medium	13%
Paraparau Rugby Football Club	Urban 2	Horowhenua Kapiti RFU	Large	224	248	271	299	331	11%	21%	34%	48%	High	High	7%
Rahui Football Club	Urban 2	Horowhenua Kapiti RFU	Medium	168	169	171	174	178	1%	2%	4%	6%	Low	Low	11%
Shannon Rugby Club	Urban 2	Horowhenua Kapiti RFU	Small	83	77	72	68	65	-8%	-13%	-18%	-22%	Medium	Medium	13%
Waikanae Rugby Football Club	Urban 2	Horowhenua Kapiti RFU	Large	235	257	279	304	334	9%	19%	30%	42%	Low	Low	7%
Bush United	Rural 1	King Country RFU	Small	48	46	44	42	41	-5%	-9%	-12%	-15%	Low	Low	0%
Kiokio United	Rural 1	King Country RFU	Small	34	33	32	31	30	-4%	-7%	-10%	-11%	Medium	Medium	14%
Mangakino	Rural 1	King Country RFU	Small	0	0	0	0	0	0%	0%	0%	0%	High	High	0%
Piopia RFC	Rural 1	King Country RFU	Small	44	41	39	38	36	-6%	-11%	-15%	-19%	Low	Low	1%
Tihoi	Rural 1	King Country RFU	Small	0	0	0	0	0	0%	0%	0%	0%	High	High	0%
Waitomo	Rural 1	King Country RFU	Small	50	47	45	44	42	-5%	-9%	-13%	-16%	Low	Low	6%
Otorohanga Sat Morning Rugby	Urban 2	King Country RFU	Medium	145	153	161	169	179	5%	11%	17%	24%	High	High	11%
Taumarunui Districts	Urban 2	King Country RFU	Small	47	41	37	35	32	-13%	-21%	-27%	-32%	Low	Low	-6%
Taumarunui Rugby & Sports Club	Urban 2	King Country RFU	Small	40	36	34	32	30	-9%	-15%	-21%	-26%	Low	Low	-6%
Taumarunui Saturday Morning Rugby	Urban 2	King Country RFU	Medium	131	139	147	155	164	6%	12%	18%	25%	High	High	-6%
Taumarunui Wahine Toa	Urban 2	King Country RFU	Small	27	25	24	23	22	-7%	-11%	-14%	-17%	High	High	-6%
Taupo Marist	Urban 2	King Country RFU	Small	95	87	81	77	72	-9%	-14%	-19%	-24%	Low	Low	12%
Taupo Sports	Urban 2	King Country RFU	Large	215	239	262	289	320	11%	22%	34%	49%	High	High	11%
Taupo United	Urban 2	King Country RFU	Medium	201	204	207	213	219	1%	3%	6%	9%	Medium	Medium	12%
Tongariro Sports	Urban 2	King Country RFU	Medium	146	155	164	172	182	6%	12%	18%	25%	High	High	1%
Waitete	Urban 2	King Country RFU	Medium	139	138	138	139	140	-1%	-1%	0%	1%	Low	Low	3%
Bunynthorpe	Rural 1	Manawatu RFU	Large	53	61	70	85	108	15%	33%	61%	104%	High	High	10%
Halcombe	Rural 1	Manawatu RFU	Small	23	22	21	21	20	-4%	-7%	-9%	-11%	Medium	Medium	9%
Old Boys Marist	Rural 1	Manawatu RFU	Large	164	172	182	196	216	5%	11%	20%	32%	Low	Low	0%
Te Kawa	Rural 1	Manawatu RFU	Large	351	387	426	476	542	10%	21%	36%	54%	High	High	8%
College Old Boys	Urban 1	Manawatu RFU	Medium	243	237	234	232	232	-3%	-4%	-4%	-4%	Medium	Medium	8%
Freyberg Old Boys	Urban 1	Manawatu RFU	Small	119	124	128	133	139	4%	8%	12%	17%	Medium	Medium	7%
Kia Toa	Urban 1	Manawatu RFU	Large	382	369	359	350	341	-3%	-6%	-8%	-11%	Low	Low	8%
Linton Army	Urban 1	Manawatu RFU	Small	47	48	49	49	50	2%	3%	5%	7%	Low	Low	18%
Marist	Urban 1	Manawatu RFU	Large	398	386	377	367	359	-3%	-5%	-8%	-10%	High	Medium	0%
Massey University	Urban 1	Manawatu RFU	Small	143	144	145	147	148	1%	2%	3%	3%	Low	Low	7%
Palmerston North High School Old Boys	Urban 1	Manawatu RFU	Small	115	125	135	147	160	9%	18%	28%	39%	High	High	7%
Ashhurst-Pohangina	Urban 2	Manawatu RFU	Medium	199	202	206	211	217	1%	3%	6%	9%	Medium	Medium	9%
Bulls	Urban 2	Manawatu RFU	Medium	157	157	159	161	165	0%	1%	3%	5%	Low	Low	8%
Bush Sports Club	Urban 2	Manawatu RFU	Medium	197	201	206	212	219	2%	4%	7%	11%	Medium	Medium	2%
Dannevirke Sports	Urban 2	Manawatu RFU	Small	50	43	39	36	34	-15%	-22%	-28%	-32%	Low	Low	4%
Feilding Old Boys Oroua	Urban 2	Manawatu RFU	Small	94	84	78	73	70	-11%	-17%	-22%	-26%	Low	Low	13%
Feilding Yellows	Urban 2	Manawatu RFU	Large	506	559	610	667	733	10%	20%	32%	45%	Medium	Medium	13%
Mt Somers	Rural 1	Mid Canterbury RU	Medium	75	70	69	69	71	-6%	-8%	-8%	-5%	Low	Low	9%
Southern - Mid Canterbury	Rural 1	Mid Canterbury RU	Large	256	278	300	326	356	8%	17%	27%	39%	Medium	Low	14%
Allenton	Urban 2	Mid Canterbury RU	Medium	170	175	180	187	194	3%	6%	10%	14%	Medium	Medium	14%
Celtic	Urban 2	Mid Canterbury RU	Large	327	361	395	432	475	11%	21%	32%	45%	Medium	Medium	15%
Collegiate - Mid Canterbury	Urban 2	Mid Canterbury RU	Medium	133	134	135	137	140	1%	2%	3%	5%	Low	Low	14%



Clubs	Area	Provincial Union	Size	Total Number of Players					Growth in Total Players				Club's Growth Classification		Growth based on Catchment population growth only (potential) 2022-2043
				2022	2028	2033	2038	2043	2022-2028	2022-2033	2022-2038	2022-2043	2022-2033	2022-2043	
Hampstead	Urban 2	Mid Canterbury RU	Medium	172	175	178	183	188	2%	4%	6%	10%	Medium	Medium	14%
Methven	Urban 2	Mid Canterbury RU	Large	267	295	322	353	388	10%	21%	32%	45%	Medium	Medium	11%
Rakaia	Urban 2	Mid Canterbury RU	Medium	129	130	132	134	137	1%	2%	4%	6%	Low	Low	21%
Tinwald	Urban 2	Mid Canterbury RU	Medium	129	136	143	150	159	5%	11%	17%	23%	High	High	14%
East Coast Bays RFC	Urban 1	North Harbour RFU	Large	794	766	745	726	709	-4%	-6%	-9%	-11%	Low	Low	22%
Glenfield RUSC	Urban 1	North Harbour RFU	Small	176	186	196	207	220	6%	11%	18%	25%	Medium	Medium	22%
Marist North Harbour RFC	Urban 1	North Harbour RFU	Medium	251	240	233	228	225	-5%	-7%	-9%	-10%	Low	Low	22%
Massey RFC	Urban 1	North Harbour RFU	Large	498	480	468	456	446	-4%	-6%	-8%	-11%	Low	Low	20%
North Shore RFC	Urban 1	North Harbour RFU	Large	637	615	600	586	573	-3%	-6%	-8%	-10%	Low	Medium	26%
Northcote-Birkenhead RFC	Urban 1	North Harbour RFU	Large	568	548	533	519	506	-4%	-6%	-9%	-11%	Low	Low	21%
Royal NZ Navy RFC	Urban 1	North Harbour RFU	Small	44	44	45	45	46	1%	2%	3%	4%	Low	Low	23%
Silverdale United RFC	Urban 1	North Harbour RFU	Large	937	904	879	856	836	-4%	-6%	-9%	-11%	Low	Low	29%
Takapuna RFC	Urban 1	North Harbour RFU	Large	489	472	459	448	437	-4%	-6%	-8%	-11%	Low	Low	21%
Helensville District RFC	Urban 2	North Harbour RFU	Large	294	326	357	393	435	11%	21%	34%	48%	High	High	21%
Kumeu RFC	Urban 2	North Harbour RFU	Large	626	693	759	836	924	11%	21%	33%	48%	High	High	19%
Mahurangi RFC	Urban 2	North Harbour RFU	Large	339	376	413	456	505	11%	22%	34%	49%	High	High	31%
Kurow	Rural 1	North Otago RFU	Large	176	192	208	227	249	9%	18%	29%	41%	Medium	Medium	3%
Maheno	Rural 1	North Otago RFU	Medium	100	102	105	111	119	2%	5%	11%	19%	Medium	Medium	4%
Union Rugby Club	Rural 1	North Otago RFU	Medium	74	70	69	71	74	-6%	-6%	-5%	-1%	Low	Low	3%
Athletic - North Otago	Urban 2	North Otago RFU	Small	36	33	31	29	27	-9%	-9%	-20%	-24%	Low	Low	4%
Excelsior Rugby Football Union	Urban 2	North Otago RFU	Medium	148	150	154	159	164	2%	4%	7%	11%	Medium	Medium	4%
Oamaru Old Boys Rugby Football Club	Urban 2	North Otago RFU	Small	34	31	29	28	26	-8%	-14%	-19%	-23%	Medium	Medium	4%
Valley Rugby Football Club	Urban 2	North Otago RFU	Medium	150	151	154	157	161	1%	3%	5%	8%	Low	Low	4%
Waitaki Wahine	Urban 2	North Otago RFU	Small	34	31	29	27	26	-9%	-15%	-20%	-25%	Low	Low	4%
Aupouri RF & Sports Club	Rural 1	Northland RFU	Small	48	47	46	46	45	-2%	-4%	-5%	-6%	High	High	16%
Awanui	Rural 1	Northland RFU	Small	52	50	49	48	47	-4%	-6%	-8%	-10%	Medium	Medium	15%
Eastern Kaiwaka	Rural 1	Northland RFU	Medium	110	123	137	154	174	12%	25%	40%	58%	High	High	21%
Eastern United	Rural 1	Northland RFU	Large	153	165	177	191	208	8%	16%	25%	36%	Low	Low	16%
Kaero	Rural 1	Northland RFU	Medium	102	106	114	125	140	4%	11%	23%	37%	High	High	17%
Kaihu Valley	Rural 1	Northland RFU	Small	36	32	29	27	25	-12%	-20%	-26%	-31%	Low	Low	27%
Manaia	Rural 1	Northland RFU	Small	0	0	0	0	0	0%	0%	0%	0%	High	High	0%
Manaia Junior Rugby Club	Rural 1	Northland RFU	Medium	89	100	112	126	144	13%	26%	42%	61%	High	High	19%
Mangakahia	Rural 1	Northland RFU	Large	208	225	243	265	291	8%	17%	27%	40%	Medium	Medium	18%
Maungaturoto Country Club	Rural 1	Northland RFU	Medium	57	64	71	80	90	13%	25%	40%	58%	High	High	20%
Mid Western Rugby & Squash Club	Rural 1	Northland RFU	Large	123	135	146	159	175	9%	19%	30%	42%	Medium	Medium	18%
MotuKohu Rugby Club	Rural 1	Northland RFU	Medium	79	67	59	53	48	-15%	-25%	-32%	-39%	Low	Low	12%
North Hokianga	Rural 1	Northland RFU	Small	49	47	46	45	44	-3%	-6%	-8%	-9%	Medium	Medium	12%
Ohaeawai RF & Sports Club	Rural 1	Northland RFU	Large	167	185	204	227	253	11%	22%	36%	52%	High	High	15%
Okaihau RUF & Sports Club	Rural 1	Northland RFU	Small	34	33	32	32	31	-3%	-4%	-6%	-8%	Medium	Medium	15%
Otamatea Hawks	Rural 1	Northland RFU	Small	42	40	39	38	37	-5%	-8%	-10%	-12%	Low	Medium	20%
Otiria RC	Rural 1	Northland RFU	Medium	87	85	85	88	92	-3%	-2%	1%	6%	Low	Low	16%
Panguru Rugby Football Club	Rural 1	Northland RFU	Small	39	37	35	34	32	-6%	-10%	-14%	-17%	Low	Low	13%
Paparoa	Rural 1	Northland RFU	Small	0	0	0	0	0	0%	0%	0%	0%	High	High	0%
Piipwai	Rural 1	Northland RFU	Small	18	18	18	18	18	-1%	-1%	0%	1%	High	High	20%
Ruawai	Rural 1	Northland RFU	Medium	54	61	69	77	88	14%	27%	43%	63%	High	High	27%
Taheke United Rugby Football Club	Rural 1	Northland RFU	Small	13	11	10	9	9	-13%	-22%	-29%	-35%	Low	Low	14%
Te Rarawa Rugby Football Club	Rural 1	Northland RFU	Large	135	142	150	160	172	5%	11%	18%	27%	Low	Low	14%
Tomarata	Rural 1	Northland RFU	Medium	57	64	72	82	93	13%	27%	43%	63%	High	High	24%
Waipapakauri Rugby Football Club	Rural 1	Northland RFU	Medium	72	81	90	102	116	12%	26%	42%	62%	High	High	14%
Waipu	Rural 1	Northland RFU	Large	228	240	253	269	289	5%	11%	18%	27%	Low	Low	20%
Whangaruru	Rural 1	Northland RFU	Small	47	44	43	41	40	-5%	-9%	-12%	-15%	Low	Low	14%
City	Urban 1	Northland RFU	Small	76	80	83	87	92	5%	10%	15%	21%	Medium	Medium	21%
Hora Hora RUFC	Urban 1	Northland RFU	Large	379	367	356	346	338	-3%	-6%	-9%	-11%	Low	Low	20%
Kamo	Urban 1	Northland RFU	Medium	297	279	268	258	251	-6%	-10%	-13%	-15%	Low	Low	20%
Marist Rugby Club - Northland	Urban 1	Northland RFU	Small	200	213	226	242	259	7%	13%	21%	29%	High	High	20%
Old Boys Marist	Urban 1	Northland RFU	Medium	263	251	243	237	233	-5%	-8%	-10%	-11%	Low	Low	0%
Old Boys Rugby & Sports Club - Northland	Urban 1	Northland RFU	Small	1	1	1	1	1	9%	18%	29%	41%	High	High	19%
Onerahi	Urban 1	Northland RFU	Small	130	137	145	153	163	6%	11%	18%	25%	Medium	Medium	19%
Tikipunga	Urban 1	Northland RFU	Small	95	101	107	114	122	7%	13%	20%	29%	High	High	21%
Dargaville Old Boys Football and Softball Club	Urban 2	Northland RFU	Small	27	26	25	24	24	-4%	-7%	-10%	-12%	High	High	27%
Hikurangi	Urban 2	Northland RFU	Large	224	247	269	294	323	10%	20%	31%	44%	Low	Low	21%
Kaikohe Rugby Club	Urban 2	Northland RFU	Large	219	243	265	291	320	11%	21%	33%	46%	High	Medium	11%
Kaitaia City	Urban 2	Northland RFU	Medium	201	205	208	212	217	2%	3%	6%	8%	Medium	Medium	14%
Kaitaia Pirates	Urban 2	Northland RFU	Small	48	43	40	38	36	-9%	-16%	-21%	-26%	Low	Low	13%
Kerikeri	Urban 2	Northland RFU	Large	441	488	533	585	645	11%	21%	33%	46%	Medium	Medium	19%
Mid Northern	Urban 2	Northland RFU	Large	219	242	265	291	320	11%	21%	33%	46%	Medium	Medium	21%
Moerewa / United Kawakawa	Urban 2	Northland RFU	Small	73	69	66	64	62	-6%	-10%	-13%	-15%	High	High	16%
Moerewa RF Sports Club	Urban 2	Northland RFU	Small	47	43	40	38	36	-9%	-15%	-19%	-23%	Low	Medium	16%
United Kawakawa	Urban 2	Northland RFU	Small	42	38	36	34	32	-8%	-14%	-19%	-23%	Medium	Medium	16%

Clubs	Area	Provincial Union	Size	Total Number of Players					Growth in Total Players				Club's Growth Classification		Growth based on Catchment population growth only (potential) 2022-2043
				2022	2028	2033	2038	2043	2022-2028	2022-2033	2022-2038	2022-2043	2022-2033	2022-2043	
Wellsford	Urban 2	Northland RFU	Medium	171	169	168	169	171	-1%	-2%	-1%	0%	Low	Low	21%
Western Sharks	Urban 2	Northland RFU	Large	270	300	327	359	395	11%	21%	33%	46%	High	High	29%
Clinton Rugby Football Club	Rural 1	Otago RFU	Large	53	57	61	65	70	7%	14%	23%	33%	Low	Low	3%
Clutha Valley Rugby Football Club	Rural 1	Otago RFU	Medium	96	93	93	95	100	-3%	-3%	-1%	4%	Low	Low	1%
Clyde-Earnsclough Rugby Football Club	Rural 1	Otago RFU	Small	35	35	34	33	33	-1%	-3%	-4%	-6%	High	High	28%
Crescent Football Club Inc	Rural 1	Otago RFU	Medium	100	94	92	92	94	-6%	-8%	-8%	-6%	Low	Low	2%
Heriot Rugby Football Club	Rural 1	Otago RFU	Medium	115	121	130	141	155	6%	13%	22%	35%	High	High	1%
Lawrence Rugby Football Club	Rural 1	Otago RFU	Medium	86	87	90	95	103	1%	5%	11%	19%	Medium	Medium	2%
Maniototo Rugby Football Club	Rural 1	Otago RFU	Medium	98	99	102	108	116	1%	4%	10%	18%	Medium	Medium	7%
Matakanui Combined Rugby Football Club	Rural 1	Otago RFU	Medium	82	83	85	89	95	1%	4%	9%	16%	Medium	Medium	19%
Owaka Rugby Football Club	Rural 1	Otago RFU	Medium	79	79	80	83	88	-1%	1%	5%	12%	Medium	Medium	-1%
Roxburgh Rugby Football Club	Rural 1	Otago RFU	Small	33	32	32	31	31	-2%	-3%	-5%	-6%	High	High	10%
Strath Taieri Rugby Football Club	Rural 1	Otago RFU	Small	43	41	40	39	38	-4%	-7%	-10%	-11%	Medium	Medium	-1%
Tapanui Rugby Football Club	Rural 1	Otago RFU	Small	0	0	0	0	0	0%	0%	0%	0%	High	High	0%
Wakatipu Rugby Football Club	Rural 1	Otago RFU	Large	300	333	365	401	443	11%	22%	34%	48%	High	High	29%
West Taieri Rugby Football Club	Rural 1	Otago RFU	Large	139	151	164	179	197	9%	18%	29%	41%	Medium	Medium	6%
Alhambra-Union Rugby Football Club	Urban 1	Otago RFU	Medium	218	218	220	224	228	0%	1%	3%	5%	High	High	4%
Dunedin Rugby Football Club	Urban 1	Otago RFU	Large	447	432	421	410	400	-3%	-6%	-8%	-10%	Medium	Low	4%
Green Island Rugby Football Club	Urban 1	Otago RFU	Large	476	460	449	438	428	-3%	-6%	-8%	-10%	Medium	Medium	5%
Harbour Rugby Football Club	Urban 1	Otago RFU	Medium	227	222	221	221	223	-2%	-3%	-3%	-2%	High	High	3%
Kaikorai Rugby Football Club	Urban 1	Otago RFU	Large	404	391	381	371	363	-3%	-6%	-8%	-10%	Medium	Medium	4%
Pirates (Otago) Rugby Football Club	Urban 1	Otago RFU	Small	131	141	151	163	177	8%	16%	25%	35%	High	High	4%
Southern Rugby Football Club	Urban 1	Otago RFU	Medium	346	339	336	335	337	-2%	-3%	-3%	-3%	High	High	4%
Unipol	Urban 1	Otago RFU	Small	125	128	130	132	134	2%	4%	6%	7%	Low	Low	4%
University of Otago Rugby Football Club	Urban 1	Otago RFU	Small	178	181	184	186	189	2%	3%	5%	6%	Low	Low	4%
Zingari-Richmond Rugby Football Club	Urban 1	Otago RFU	Small	214	220	227	234	243	3%	6%	9%	13%	Low	Low	4%
Alexandra Rugby Football Club	Urban 2	Otago RFU	Medium	158	165	171	178	185	4%	8%	12%	17%	High	High	21%
Arrowtown Rugby Football Club	Urban 2	Otago RFU	Medium	149	156	163	171	179	5%	10%	15%	20%	High	High	32%
Brighton Rugby Football Club	Urban 2	Otago RFU	Small	21	20	18	18	17	-7%	-12%	-16%	-19%	High	High	5%
Clutha Rugby Football Club	Urban 2	Otago RFU	Medium	151	157	162	168	175	4%	7%	11%	16%	High	High	0%
Cromwell Rugby Football Club	Urban 2	Otago RFU	Large	322	358	390	427	470	11%	21%	33%	46%	High	Medium	34%
Eastern Rugby Football Club	Urban 2	Otago RFU	Medium	179	181	184	189	194	1%	3%	5%	8%	Medium	Medium	3%
Taieri Rugby Football Club	Urban 2	Otago RFU	Large	365	402	438	479	527	10%	20%	31%	44%	Low	Low	6%
Toko (Otago) Rugby Football Club	Urban 2	Otago RFU	Medium	121	125	129	133	139	3%	6%	10%	15%	High	High	8%
Upper Clutha Rugby Football Club	Urban 2	Otago RFU	Large	294	329	362	398	440	12%	23%	36%	50%	High	High	48%
Mahia RFC	Rural 1	Poverty Bay RFU	Small	0	0	0	0	0	0%	0%	0%	0%	High	High	0%
Ngatapa Rugby Club	Rural 1	Poverty Bay RFU	Large	299	325	351	381	417	9%	17%	28%	39%	Medium	Medium	6%
Nuhaka Rugby Club	Rural 1	Poverty Bay RFU	Small	43	41	39	38	37	-5%	-8%	-11%	-14%	Low	Low	6%
Waikohu	Rural 1	Poverty Bay RFU	Medium	106	108	112	118	127	2%	6%	12%	20%	Medium	Medium	6%
Horouta Sports Club	Urban 1	Poverty Bay RFU	Small	107	116	125	135	147	8%	16%	26%	37%	High	High	5%
H SOB Sports Club	Urban 1	Poverty Bay RFU	Medium	227	216	208	202	196	-5%	-8%	-11%	-14%	Low	Low	6%
OBM	Urban 1	Poverty Bay RFU	Small	157	166	174	184	196	6%	11%	17%	25%	Medium	Medium	5%
Pirates Sports Club	Urban 1	Poverty Bay RFU	Small	136	139	142	146	150	2%	5%	7%	10%	Low	Low	5%
Young Maori Party Inc	Urban 1	Poverty Bay RFU	Medium	231	223	218	214	212	-3%	-6%	-7%	-8%	Medium	Medium	6%
Tapuae RFC	Urban 2	Poverty Bay RFU	Small	81	75	71	67	64	-8%	-13%	-17%	-21%	Medium	Medium	6%
Balfour	Rural 1	Rugby Southland	Medium	67	68	72	76	82	2%	7%	14%	23%	High	Medium	1%
Central Pirates	Rural 1	Rugby Southland	Medium	104	105	108	115	124	1%	4%	10%	19%	Medium	Medium	5%
Drummond	Rural 1	Rugby Southland	Small	30	29	29	29	28	-2%	-3%	-4%	-5%	High	High	6%
Drummond Limehills Star	Rural 1	Rugby Southland	Medium	89	90	94	99	107	1%	5%	12%	21%	Medium	Medium	5%
Edendale	Rural 1	Rugby Southland	Medium	91	93	97	103	112	2%	6%	13%	23%	Medium	Medium	0%
Limehills Star	Rural 1	Rugby Southland	Small	47	46	45	44	43	-3%	-5%	-7%	-9%	Medium	Medium	7%
Lumsden	Rural 1	Rugby Southland	Small	28	27	26	26	25	-4%	-6%	-9%	-11%	Medium	Medium	3%
Mossburn Pirates	Rural 1	Rugby Southland	Medium	76	75	76	78	81	-1%	0%	2%	7%	Medium	Low	2%
Ohai/Nightcaps	Rural 1	Rugby Southland	Medium	70	68	69	71	75	-2%	-1%	2%	7%	Low	NA	6%
Otautau	Rural 1	Rugby Southland	Small	48	47	46	45	44	-3%	-5%	-6%	-8%	Medium	Medium	5%
Pukerau	Rural 1	Rugby Southland	Small	0	0	0	0	0	0%	0%	0%	0%	High	High	0%
Riversdale	Rural 1	Rugby Southland	Medium	68	77	86	98	111	13%	27%	43%	63%	High	High	0%
Tokanui	Rural 1	Rugby Southland	Medium	108	105	105	108	113	-3%	-3%	0%	4%	Low	Low	-2%
Waiau Star	Rural 1	Rugby Southland	Large	129	143	160	181	208	11%	24%	40%	62%	High	High	5%
Waikaia	Rural 1	Rugby Southland	Small	32	31	30	29	29	-4%	-7%	-9%	-11%	Medium	Medium	4%
Waikaka White Star	Rural 1	Rugby Southland	Medium	93	88	86	87	89	-6%	-7%	-7%	-5%	Low	Low	0%
Wrights Bush	Rural 1	Rugby Southland	Small	18	18	17	17	17	-3%	-4%	-6%	-7%	High	Medium	5%
Wyndham	Rural 1	Rugby Southland	Large	120	131	142	156	172	9%	19%	30%	43%	Medium	Medium	0%
Blues - Southland	Urban 1	Rugby Southland	Medium	268	259	255	252	250	-3%	-5%	-6%	-7%	Medium	Medium	5%
Collegiate - Southland	Urban 1	Rugby Southland	Small	87	89	91	93	95	2%	4%	7%	10%	Low	Low	5%
Marist - Southland	Urban 1	Rugby Southland	Medium	302	294	289	287	286	-3%	-4%	-5%	-5%	Medium	Medium	5%
Myross Bush	Urban 1	Rugby Southland	Small	76	81	87	93	101	7%	14%	23%	33%	High	High	5%
Pirates Old Boys	Urban 1	Rugby Southland	Medium	248	243	240	240	240	-2%	-3%	-3%	-3%	High	High	5%
Star	Urban 1	Rugby Southland	Medium	325	311	302	295	290	-4%	-7%	-9%	-11%	Low	Low	5%

Clubs	Area	Provincial Union	Size	Total Number of Players					Growth in Total Players				Club's Growth Classification		Growth based on Catchment population growth only (potential) 2022-2043
				2022	2028	2033	2038	2043	2022-2028	2022-2033	2022-2038	2022-2043	2022-2033	2022-2043	
Waikiki	Urban 1	Rugby Southland	Medium	224	214	207	202	198	-5%	-8%	-10%	-12%	Low	Low	5%
Woodlands	Urban 1	Rugby Southland	Small	200	208	217	227	238	4%	8%	13%	19%	Medium	Medium	5%
Albion	Urban 2	Rugby Southland	Large	204	224	244	266	292	10%	19%	31%	43%	Low	Low	-1%
Bluff	Urban 2	Rugby Southland	Small	93	85	79	75	71	-9%	-15%	-20%	-24%	Low	Low	5%
ENC Barbarians	Urban 2	Rugby Southland	Small	30	27	25	24	22	-9%	-16%	-22%	-27%	Low	Low	-1%
Mataura	Urban 2	Rugby Southland	Medium	159	158	159	161	163	-1%	0%	1%	2%	Low	Low	-1%
Midlands	Urban 2	Rugby Southland	Medium	186	188	190	194	199	1%	2%	4%	7%	Low	Low	6%
Pioneer	Urban 2	Rugby Southland	Medium	203	204	207	212	217	1%	2%	4%	7%	Low	Low	-1%
Riverton	Urban 2	Rugby Southland	Medium	157	161	165	170	176	2%	5%	8%	12%	Medium	Medium	4%
Te Anau	Urban 2	Rugby Southland	Medium	153	158	162	168	175	3%	6%	10%	15%	Medium	High	13%
Celtic Rugby Club	Rural 1	South Canterbury RFU	Large	253	278	302	331	364	10%	20%	31%	44%	High	Medium	3%
Mackenzie Rugby Club	Rural 1	South Canterbury RFU	Large	170	182	195	209	226	7%	15%	23%	33%	Low	Low	13%
Pareora	Rural 1	South Canterbury RFU	Small	46	45	44	43	42	-3%	-5%	-7%	-9%	Medium	Medium	2%
Geraldine Rugby Club	Urban 2	South Canterbury RFU	Large	326	361	394	432	475	11%	21%	33%	46%	Medium	Medium	4%
Harlequins Rugby Club	Urban 2	South Canterbury RFU	Large	263	288	313	341	373	10%	19%	30%	42%	Low	Low	2%
Old Boys Sports Club, Timaru	Urban 2	South Canterbury RFU	Large	250	276	301	330	364	10%	20%	32%	45%	Medium	Medium	3%
Pleasant Point Rugby Club	Urban 2	South Canterbury RFU	Large	207	228	249	273	300	10%	20%	32%	45%	Low	Medium	1%
Temuka Rugby Club	Urban 2	South Canterbury RFU	Large	214	237	259	284	313	11%	21%	33%	46%	Medium	High	1%
Waimate Rugby Club	Urban 2	South Canterbury RFU	Large	214	235	255	278	304	10%	19%	30%	42%	Low	Low	3%
Coastal Rugby Sports Club	Rural 1	Taranaki RFU	Large	287	308	329	353	381	7%	15%	23%	33%	Low	Low	-8%
Coastal-Rahotu	Rural 1	Taranaki RFU	Small	1	1	1	1	1	-3%	-5%	-7%	-9%	Medium	Medium	2%
Kaitake	Rural 1	Taranaki RFU	Medium	110	114	120	128	140	3%	9%	17%	27%	High	High	12%
Kaponga	Rural 1	Taranaki RFU	Small	51	49	48	47	46	-4%	-6%	-8%	-9%	Medium	Medium	3%
Kaponga Rugby Football Club	Rural 1	Taranaki RFU	Medium	65	73	82	92	104	13%	26%	41%	60%	High	High	3%
Normanby Rugby Club	Rural 1	Taranaki RFU	Small	0	0	0	0	0	0%	0%	0%	0%	High	High	0%
Okaiawa	Rural 1	Taranaki RFU	Medium	55	49	47	46	47	-11%	-15%	-16%	-15%	Low	Low	3%
Bell Block	Urban 1	Taranaki RFU	Small	52	56	60	64	69	8%	15%	24%	34%	High	High	11%
New Plymouth Old Boys RF & Sports Club	Urban 1	Taranaki RFU	Medium	294	283	276	271	267	-4%	-6%	-8%	-9%	Medium	Medium	13%
Spotswood United Rugby and Sports Club	Urban 1	Taranaki RFU	Small	195	203	211	220	230	4%	8%	13%	18%	Medium	Medium	13%
Tukapa Rugby & Sports Club	Urban 1	Taranaki RFU	Large	388	376	366	357	348	-3%	-6%	-8%	-10%	Medium	Medium	13%
Clifton Rugby & Sports Club	Urban 2	Taranaki RFU	Large	413	453	491	536	587	10%	19%	30%	42%	Low	Low	11%
Coastal-Opunake	Urban 2	Taranaki RFU	Small	2	2	2	2	1	-10%	-16%	-22%	-27%	Low	Low	-2%
Eltham Rugby Football & Netball Club Inc	Urban 2	Taranaki RFU	Small	42	38	36	34	32	-9%	-15%	-20%	-25%	Low	Low	4%
Inglewood United	Urban 2	Taranaki RFU	Large	327	360	392	429	471	10%	20%	31%	44%	Low	Low	9%
Patea Rugby & Sports Club	Urban 2	Taranaki RFU	Small	81	74	69	65	61	-9%	-15%	-20%	-24%	Low	Low	2%
Southern - Taranaki	Urban 2	Taranaki RFU	Large	349	386	422	463	509	11%	21%	33%	46%	Medium	Medium	3%
Stratford	Urban 2	Taranaki RFU	Large	408	452	495	543	598	11%	21%	33%	47%	High	High	4%
Collingwood	Rural 1	Tasman RFU	Small	39	37	36	35	35	-4%	-7%	-10%	-11%	Medium	Medium	9%
Moutere	Rural 1	Tasman RFU	Large	291	318	345	376	413	9%	18%	29%	42%	Medium	Medium	7%
Murchison	Rural 1	Tasman RFU	Small	43	42	41	40	39	-2%	-5%	-7%	-9%	Medium	Medium	7%
Pelorus	Rural 1	Tasman RFU	Medium	76	76	79	83	90	0%	3%	10%	19%	Medium	Medium	6%
Rangers	Rural 1	Tasman RFU	Medium	71	80	90	102	116	13%	27%	43%	63%	High	High	14%
Riwaka Rugby Club	Rural 1	Tasman RFU	Large	148	162	177	193	212	10%	19%	31%	43%	Medium	Medium	14%
Tapawera	Rural 1	Tasman RFU	Medium	67	63	62	62	61	-6%	-8%	-8%	-7%	Low	Low	9%
Marist (Nelson)	Urban 1	Tasman RFU	Medium	278	267	260	255	251	-4%	-7%	-8%	-10%	Low	Low	6%
Nelson RFC	Urban 1	Tasman RFU	Medium	221	213	207	203	200	-4%	-6%	-8%	-9%	Medium	Medium	5%
Stoke Rugby Club	Urban 1	Tasman RFU	Medium	280	267	259	252	248	-5%	-8%	-10%	-12%	Low	Low	9%
Awatere	Urban 2	Tasman RFU	Small	114	104	97	91	86	-9%	-15%	-20%	-24%	Low	Low	8%
Central	Urban 2	Tasman RFU	Medium	184	186	189	193	198	1%	3%	5%	8%	Low	Medium	8%
Harlequins - Marlborough	Urban 2	Tasman RFU	Medium	149	155	160	167	174	4%	7%	12%	17%	High	High	8%
Huia - Nelson Bays	Urban 2	Tasman RFU	Medium	181	186	192	200	208	3%	6%	10%	15%	High	High	14%
Marlborough Boys Rugby Club	Urban 2	Tasman RFU	Large	216	239	260	285	312	11%	21%	32%	45%	Medium	NA	8%
Motueka United Rugby & Sports Club	Urban 2	Tasman RFU	Small	36	33	32	30	29	-7%	-12%	-17%	-21%	Medium	Medium	17%
Renwick	Urban 2	Tasman RFU	Medium	156	156	158	160	164	0%	1%	3%	5%	Low	Low	8%
Takaka	Urban 2	Tasman RFU	Medium	146	150	154	159	164	3%	5%	9%	13%	Medium	Medium	8%
Waimea Old Boys	Urban 2	Tasman RFU	Large	318	351	383	420	462	10%	21%	32%	45%	Medium	Medium	10%
Waitohi	Urban 2	Tasman RFU	Medium	173	175	178	182	186	1%	3%	5%	8%	Low	Medium	5%
Wanderers	Urban 2	Tasman RFU	Large	224	248	272	299	330	11%	22%	34%	47%	High	High	17%
Coromandel Junior Rugby	Rural 1	Thames Valley RFU	Medium	58	64	71	79	89	11%	23%	37%	53%	High	High	0%
Hauraki North Rugby & Sports Club	Rural 1	Thames Valley RFU	Small	48	45	43	41	39	-6%	-11%	-15%	-19%	Low	Low	13%
Hauraki Plains Youth Rugby Club	Rural 1	Thames Valley RFU	Large	181	202	223	248	277	12%	23%	37%	53%	High	High	6%
Paeroa Rugby & Sports	Rural 1	Thames Valley RFU	Small	43	40	38	37	35	-6%	-11%	-15%	-19%	Low	Low	7%
Te Aroha Junior Rugby	Rural 1	Thames Valley RFU	Large	161	180	198	219	244	12%	23%	36%	51%	High	High	5%
Coromandel Rugby Football & Sports Club	Urban 2	Thames Valley RFU	Small	37	34	32	31	29	-7%	-13%	-17%	-21%	Medium	Medium	3%
Mercury Bay Rugby & Sports Club	Urban 2	Thames Valley RFU	Medium	196	201	207	214	223	3%	6%	9%	14%	Medium	Medium	5%
Ngatea Rugby & Sports Club	Urban 2	Thames Valley RFU	Small	49	45	43	41	39	-8%	-13%	-17%	-21%	Medium	Medium	1%
Paeroa Junior Rugby	Urban 2	Thames Valley RFU	Medium	141	150	159	168	178	7%	13%	19%	26%	High	High	6%
Tairua Rugby & Sports Club	Urban 2	Thames Valley RFU	Small	71	64	59	56	53	-10%	-16%	-22%	-26%	Low	Low	9%
Te Aroha College Old Boys Rugby & Sports Club (COBRAS)	Urban 2	Thames Valley RFU	Small	70	64	60	57	54	-9%	-14%	-19%	-23%	Low	Medium	9%

Clubs	Area	Provincial Union	Size	Total Number of Players					Growth in Total Players				Club's Growth Classification		Growth based on Catchment population growth only (potential) 2022-2043
				2022	2028	2033	2038	2043	2022-2028	2022-2033	2022-2038	2022-2043	2022-2033	2022-2043	
Thames Junior Rugby	Urban 2	Thames Valley RFU	Large	211	234	256	282	311	11%	22%	34%	47%	High	High	7%
Thames Rugby & Sports Club	Urban 2	Thames Valley RFU	Small	60	55	52	49	46	-8%	-14%	-19%	-23%	Medium	Medium	1%
Waihi Athletic Rugby & Sports Club	Urban 2	Thames Valley RFU	Small	73	67	64	61	58	-8%	-13%	-17%	-21%	Medium	Medium	12%
Waihi Youth Rugby Club	Urban 2	Thames Valley RFU	Large	246	272	297	326	359	11%	21%	33%	46%	Medium	Medium	7%
Waihou Rugby Football Club	Urban 2	Thames Valley RFU	Small	79	73	68	65	62	-8%	-14%	-18%	-22%	Medium	Medium	8%
Whangamata Junior Rugby	Urban 2	Thames Valley RFU	Medium	147	156	164	173	184	6%	11%	18%	25%	High	High	1%
Whangamata Rugby & Sports Club	Urban 2	Thames Valley RFU	Small	37	34	32	31	29	-8%	-13%	-17%	-22%	Medium	Medium	2%
Matangi Hillcrest Sports Club	Rural 1	Waikato RFU	Small	2	2	2	2	2	2%	5%	8%	11%	High	High	26%
Northern Rugby Football Club	Rural 1	Waikato RFU	Small	37	36	36	35	35	-2%	-3%	-5%	-6%	High	High	15%
Ohaupo Rugby Football Club	Rural 1	Waikato RFU	Large	151	167	182	200	220	11%	21%	32%	46%	High	High	24%
Pirongia Rugby & Sports Club	Rural 1	Waikato RFU	Large	266	289	313	342	377	9%	18%	29%	42%	Medium	Medium	14%
Taupiri Rugby Football Club	Rural 1	Waikato RFU	Large	277	303	329	359	395	9%	19%	30%	43%	Medium	Medium	27%
Te Kowhai Rugby Club	Rural 1	Waikato RFU	Large	143	161	178	199	224	12%	25%	39%	57%	High	High	29%
Whatawhata Rugby Club	Rural 1	Waikato RFU	Small	1	1	1	1	1	-6%	-11%	-15%	-18%	Low	Low	28%
Fairfield United Old Boys	Urban 1	Waikato RFU	Small	42	44	45	46	48	4%	7%	10%	14%	Medium	Medium	16%
Frankton Rugby Sports Club	Urban 1	Waikato RFU	Small	198	208	218	228	241	5%	10%	15%	22%	Medium	Medium	20%
Fraser Tech Rugby Football Club	Urban 1	Waikato RFU	Large	422	411	402	394	386	-3%	-5%	-7%	-9%	High	High	29%
Hamilton Marist Rugby Football Club	Urban 1	Waikato RFU	Large	562	546	533	520	508	-3%	-5%	-8%	-10%	High	High	25%
Hamilton Old Boys	Urban 1	Waikato RFU	Large	503	489	478	467	456	-3%	-5%	-7%	-9%	High	High	29%
Jaradites Rugby Sports Club	Urban 1	Waikato RFU	Small	74	75	75	76	76	1%	1%	2%	3%	Low	Low	22%
Melville Rugby & Sports Club	Urban 1	Waikato RFU	Medium	348	346	345	347	350	-1%	-1%	0%	0%	High	High	26%
New Zealand Harlequins Rugby Football Club	Urban 1	Waikato RFU	Small	0	0	0	0	0	0%	0%	0%	0%	Low	Low	0%
Suburbs Incorporated	Urban 1	Waikato RFU	Large	459	446	435	424	415	-3%	-5%	-8%	-10%	High	High	23%
Te Rapa Rugby Football Club	Urban 1	Waikato RFU	Medium	283	280	279	279	280	-1%	-2%	-2%	-1%	High	High	22%
Waikato University Rugby Club	Urban 1	Waikato RFU	Small	115	117	118	120	121	1%	3%	4%	6%	Low	Low	21%
Cambridge Junior Rugby Club	Urban 2	Waikato RFU	Medium	137	147	156	166	178	7%	14%	21%	30%	High	High	23%
Hautapu Rugby & Sports Club	Urban 2	Waikato RFU	Large	416	461	504	553	609	11%	21%	33%	46%	High	High	22%
Hautapu Rugby & Sports Club	Urban 2	Waikato RFU	Large	416	461	504	553	609	11%	21%	33%	46%	High	High	22%
Hinuera Rugby & Sports Club	Urban 2	Waikato RFU	Large	313	344	373	406	443	10%	19%	30%	42%	Low	Low	6%
Huntly College Old Boys Rugby Club	Urban 2	Waikato RFU	Small	16	15	14	14	13	-6%	-11%	-14%	-17%	High	High	33%
Kereone Rugby & Sports Club	Urban 2	Waikato RFU	Small	101	94	89	85	81	-7%	-12%	-16%	-19%	High	High	23%
Kihikihi Rugby Sports Club	Urban 2	Waikato RFU	Small	80	74	70	67	65	-8%	-12%	-16%	-19%	Medium	High	25%
Leamington Rugby Sports Club	Urban 2	Waikato RFU	Large	227	251	274	300	330	11%	21%	32%	45%	Medium	Medium	27%
Morrinsville Rugby & Sports Club	Urban 2	Waikato RFU	Large	365	401	435	473	516	10%	19%	30%	41%	Low	Low	16%
Ngaruawahia Rugby Sports Club	Urban 2	Waikato RFU	Small	65	61	57	54	52	-7%	-12%	-16%	-20%	High	Medium	30%
Otorohanga Sports Club	Urban 2	Waikato RFU	Small	99	90	85	80	77	-9%	-14%	-19%	-23%	Medium	Medium	11%
Putaruru Rugby Football Club	Urban 2	Waikato RFU	Large	244	268	291	317	347	10%	19%	30%	42%	Low	Low	12%
Raglan Rugby Sports Club	Urban 2	Waikato RFU	Medium	132	138	143	149	156	4%	8%	13%	19%	High	High	40%
Southern United Rugby Football Club	Urban 2	Waikato RFU	Large	271	300	328	360	396	11%	21%	33%	46%	Medium	Medium	9%
Te Awamutu Marist Club	Urban 2	Waikato RFU	Medium	184	194	203	213	225	5%	10%	16%	22%	High	High	15%
Te Awamutu Sports & Recreation Club	Urban 2	Waikato RFU	Large	427	473	517	568	626	11%	21%	33%	47%	High	High	15%
United Matamata Sports Club	Urban 2	Waikato RFU	Large	383	420	455	494	538	10%	19%	29%	41%	Low	Low	6%
East Coast	Rural 1	Wairarapa Bush RFU	Large	135	146	157	171	188	8%	17%	27%	39%	Low	Medium	6%
Eketahuna	Rural 1	Wairarapa Bush RFU	Medium	68	67	68	69	73	-2%	-1%	2%	7%	NA	Medium	4%
Gladstone	Rural 1	Wairarapa Bush RFU	Large	138	152	165	180	198	10%	20%	31%	43%	High	Medium	11%
Puketoi	Rural 1	Wairarapa Bush RFU	Small	2	2	2	2	2	-5%	-9%	-14%	-18%	Low	Low	2%
Marist	Urban 1	Wairarapa Bush RFU	Small	398	386	377	367	359	-3%	-5%	-8%	-10%	Low	Low	0%
Carterton	Urban 2	Wairarapa Bush RFU	Medium	168	169	170	172	175	0%	1%	2%	4%	Low	Low	11%
Featherston	Urban 2	Wairarapa Bush RFU	Small	20	18	17	16	15	-8%	-14%	-20%	-24%	Medium	Low	12%
Greytown	Urban 2	Wairarapa Bush RFU	Small	114	107	102	97	94	-6%	-11%	-15%	-18%	High	High	11%
Martinborough	Urban 2	Wairarapa Bush RFU	Medium	156	155	156	159	162	0%	0%	2%	4%	Low	Low	13%
Masterton Red Star	Urban 2	Wairarapa Bush RFU	Small	112	102	96	90	86	-9%	-14%	-19%	-24%	Low	Low	11%
Pioneer RFC	Urban 2	Wairarapa Bush RFU	Large	225	247	268	291	318	10%	19%	30%	41%	Low	Low	10%
Tuhirangi	Urban 2	Wairarapa Bush RFU	Small	78	73	69	65	62	-7%	-12%	-16%	-20%	Medium	Medium	11%
Avalon Rugby Football Club	Urban 1	Wellington RFU	Medium	282	278	276	277	278	-1%	-2%	-2%	-1%	High	High	10%
Eastbourne Rugby Football Club Inc	Urban 1	Wellington RFU	Small	151	159	168	177	188	6%	11%	17%	24%	Medium	Medium	14%
Hutt Old Boys Marist Rugby Football Club Inc	Urban 1	Wellington RFU	Large	449	436	425	415	405	-3%	-5%	-8%	-10%	High	Medium	9%
Johnsonville Rugby Football Club Inc	Urban 1	Wellington RFU	Large	380	367	358	351	343	-3%	-6%	-8%	-10%	Medium	High	11%
Marist St Pats Rugby Football Club Inc	Urban 1	Wellington RFU	Large	446	430	419	409	399	-4%	-6%	-8%	-11%	Low	Low	9%
Newlands RFC	Urban 1	Wellington RFU	Small	117	125	136	148	162	7%	16%	27%	38%	High	High	12%
Northern United Rugby Football Club	Urban 1	Wellington RFU	Large	547	528	515	503	491	-3%	-6%	-8%	-10%	Medium	Medium	12%
Old Boys University RFC	Urban 1	Wellington RFU	Medium	305	317	329	341	355	4%	8%	12%	16%	High	High	9%
Oriental Rongotai Football Club Inc	Urban 1	Wellington RFU	Medium	299	296	296	298	301	-1%	-1%	0%	1%	High	High	9%
Paremata-Plimmerton RFC	Urban 1	Wellington RFU	Large	581	561	547	533	521	-3%	-6%	-8%	-10%	Low	Medium	12%
Petone Rugby Football Club Inc	Urban 1	Wellington RFU	Large	489	473	461	450	438	-3%	-6%	-8%	-10%	Medium	Medium	10%
Poneke Football Club Inc	Urban 1	Wellington RFU	Large	480	465	455	446	436	-3%	-5%	-7%	-9%	High	High	9%
Rimutaka Rugby Football Club	Urban 1	Wellington RFU	Small	0	0	0	0	0	0%	0%	0%	0%	Low	Low	0%
Stokes Valley Rugby Football Club Inc	Urban 1	Wellington RFU	Medium	264	256	251	246	243	-3%	-5%	-7%	-8%	Medium	Medium	10%
Tawa Rugby Football Club Inc	Urban 1	Wellington RFU	Medium	329	316	309	304	300	-4%	-6%	-8%	-9%	Medium	Medium	13%

Clubs	Area	Provincial Union	Size	Total Number of Players					Growth in Total Players				Club's Growth Classification		Growth based on Catchment population growth only (potential) 2022-2043
				2022	2028	2033	2038	2043	2022-2028	2022-2033	2022-2038	2022-2043	2022-2033	2022-2043	
Upper Hutt Rugby Football Club	Urban 1	Wellington RFU	Large	416	406	396	386	376	-3%	-5%	-7%	-10%	High	High	12%
Wainuiomata Rugby Football Club	Urban 1	Wellington RFU	Large	442	428	416	405	395	-3%	-6%	-8%	-11%	Medium	Low	10%
Wellington Football Club Inc	Urban 1	Wellington RFU	Medium	220	220	221	224	228	0%	1%	2%	4%	High	High	9%
Western Suburbs Rugby Football Club	Urban 1	Wellington RFU	Large	378	364	357	350	343	-4%	-6%	-7%	-9%	High	High	10%
Grey Valley	Rural 1	West Coast RFU	Medium	61	60	61	63	67	-1%	0%	4%	9%	Medium	Medium	-8%
South Westland	Rural 1	West Coast RFU	Medium	75	73	73	74	77	-3%	-3%	-1%	2%	Low	Low	-5%
Blaketown	Urban 2	West Coast RFU	Medium	173	176	179	183	188	2%	4%	6%	9%	Medium	Medium	-3%
Kiwi	Urban 2	West Coast RFU	Medium	138	140	142	144	148	1%	3%	5%	7%	Medium	Low	-5%
Marist - West Coast	Urban 2	West Coast RFU	Medium	182	184	187	191	195	1%	3%	5%	7%	Medium	Low	-3%
West	Urban 2	West Coast RFU	Medium	146	148	150	152	156	1%	3%	4%	7%	Low	Low	-5%
Border Rugby Football Club	Rural 1	Whanganui RFU	Medium	115	112	112	115	120	-3%	-3%	0%	4%	Low	Low	0%
Counties Rugby Football Club	Rural 1	Whanganui RFU	Small	42	40	39	38	37	-4%	-7%	-10%	-12%	Medium	Low	0%
Hunterville Rugby Football Club	Rural 1	Whanganui RFU	Medium	39	32	28	25	23	-18%	-28%	-35%	-41%	Low	Low	8%
Ngamatapouri	Rural 1	Whanganui RFU	Small	33	32	30	29	28	-4%	-9%	-12%	-16%	Low	Low	-11%
Ratana Pa Maramatanga Sports Club	Rural 1	Whanganui RFU	Large	53	57	62	67	73	8%	17%	27%	38%	Low	Low	6%
Waiouru Rugby Club	Rural 1	Whanganui RFU	Small	26	25	24	24	23	-3%	-6%	-8%	-10%	Medium	Medium	-3%
Kaiaeru R F C	Urban 1	Whanganui RFU	Medium	218	210	204	200	196	-4%	-6%	-8%	-10%	Low	Low	6%
Marist - Wanganui	Urban 1	Whanganui RFU	Medium	226	220	217	215	214	-2%	-4%	-5%	-5%	Medium	Medium	6%
Wanganui Pirates R F C	Urban 1	Whanganui RFU	Small	141	148	156	164	174	5%	11%	16%	23%	Medium	Medium	7%
Marion Junior Rugby	Urban 2	Whanganui RFU	Small	85	78	73	69	65	-8%	-14%	-19%	-24%	Medium	Low	10%
Marion Rugby and Sports Club	Urban 2	Whanganui RFU	Small	39	37	35	34	33	-6%	-10%	-13%	-16%	High	High	9%
Ruapehu RF & Sports Club	Urban 2	Whanganui RFU	Medium	170	174	178	184	191	2%	5%	8%	12%	Medium	Medium	-2%
Taihape Rugby Club	Urban 2	Whanganui RFU	Small	57	51	47	44	42	-10%	-17%	-22%	-27%	Low	Low	2%
Taihape Saturday Morning Rugby	Urban 2	Whanganui RFU	Small	115	105	97	91	86	-9%	-15%	-21%	-25%	Low	Low	2%
Utiku & Old Boys	Urban 2	Whanganui RFU	Small	28	25	23	21	20	-12%	-18%	-24%	-28%	Low	Low	2%